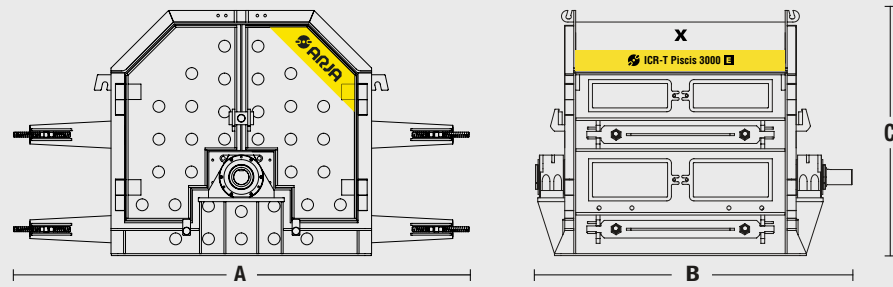


**IMPACT CRUSHER**  
**ICR-T Piscis**  
1000 / 2000 / 3000

**E** HYDRAULIC  
CLAMPING SYSTEM



**IMPACT CRUSHER**  
**ICR-T Piscis 1000 / 2000 / 3000**



Model	TPH	kW	mm	mm	Kg	Un	A x B x C
Piscis 1000	60	110	140 x 500	0 - 90	6750	2	3450 x 1325 x 1905
Piscis 2000	120	200	140 x 1000	0 - 90	10400	4	3450 x 1860 x 1905
Piscis 3000	180	315	140 x 1500	0 - 90	14800	6	3550 x 2460 x 1905

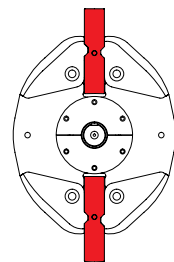
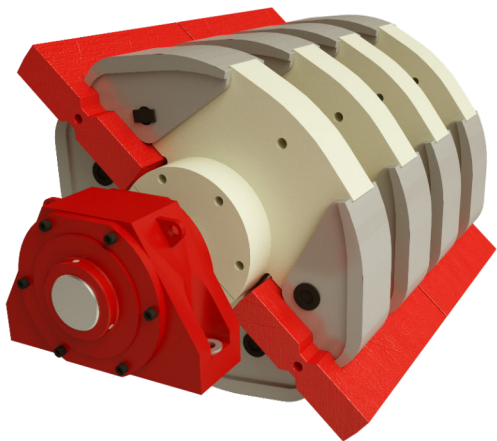
Production  
 Power  
 Feed opening  
 Feed size  
 Weight  
 Blow Bars

**THE HIGHEST SAND PRODUCTION RATIO IN THE MARKET**

Outstanding grading curve.  
Increasing your profit with high wearing ceramic consumables.



**DINAFLOW**  
ENERGY SYSTEM RECUPERATION



ICR-S Piscis	1000	2000	3000
Diameter (mm)	1000	1000	1000
Length (mm)	525	1025	1600
Weight (kg)	859	1458	2552
Bars (u)	2	4	6
Arms (u)	2	2	2

**IMPROVE YOUR PERFORMANCE**

ALL OUR WEAR PARTS ARE AVAILABLE IN:  
Ceramic / High Chrome / Martensitic



**CR 60 / 180 TPH**

**HARD & ABRASIVE STONE**

**HIGH PRODUCTIVITY**



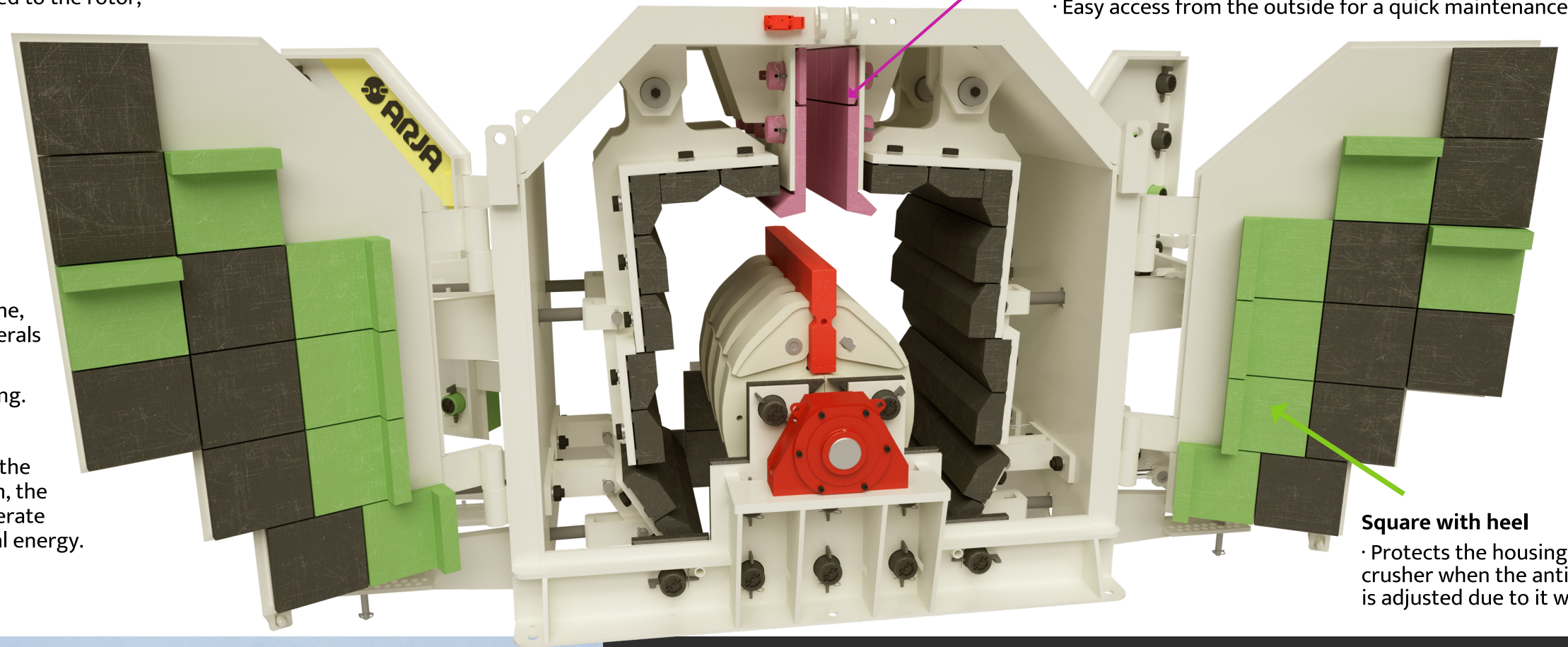
Carretera Alamús, s/n, E-25221  
Els Alamús, Lleida, Spain.

+34 973 199 163

info@arja.com

www.arja.com

- Tertiary impact crusher very versatile. It can perform tertiary works and shape rectifiers.
- Perfect cubical shape by 4 impact aprons adjusted to the rotor, 2 on each side. A reversible equipment with standard hydraulic adjustment system.
- Maximum feeding size up to 90 mm.
- Output size 0-10 mm (in a single pass).
- Easy and quick access to the crushing chamber through 4 lateral doors.
- Interchangeable consumable parts.
- Lifting system to simplify maintenance of consumable parts.
- Impact plates and blow bars made of high chrome, also available in ceramic format for abrasive minerals and martensitic for debris.
- 4 blow bars positions, efficiency of original casting.
- Oversized and reinforced rotor.
- Thanks to the DINAFLow system together with the rotor impact with horizontal axis crushing system, the inertia produced by its movement is used to generate electricity, reducing the consumption of electrical energy.



**Input ramp**

- Lined with casting, for a longer durability.
- Interchangeable parts.
- Easy access from the outside for a quick maintenance.

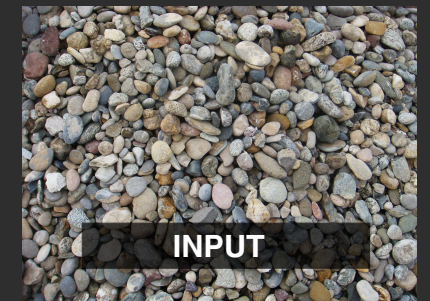
**Square with heel**

- Protects the housing of the crusher when the anti-return apron is adjusted due to it wear.



**Feeding inlet**

- Maximum feeding size up to 90 mm.
- The feeding inlet design has an anti-bounce system.
- This system minimizes the wear on the hoppers and conveyor belts breakdown.



**INPUT**



**OUTPUT**

