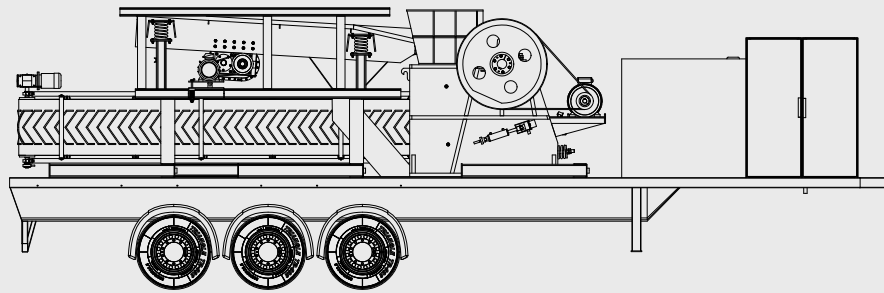




PRIMARY PLANT
LEMMING I

- CR JCR-P Leo 0806 / 1075
- FD FD-AVA 800 / 1000
- CB CD-JN 800



**LEMMING
CRUSHERS**

PRIMARY PLANT
LEMMING I

ON
WHEELS

LM

JAW CRUSHER
CR JCR-P Leo

FEEDER
FD FD-AVA

CONVEYOR BELT
CB CB-JN



**Security
Systems**

Designed exceeding regulations, with accessibility, and ease of use criteria.



**Eco
Friendly**

The ARJA algorithm optimizes the engine's performance.



**Cost
Savings**

NO-CLOG system, eliminates material jams.

NO-CLOG
ANTI CLOG SYSTEM

GENERAL DATA

Transport height	4000 mm
Transport width	2500 mm
Transport length	12900 mm
Weight	30000 / 40000 Kg

CONVEYOR BELT

Belt width	800 mm
Band Type	Ribbed / Smooth
Transmission	Gearmotor
Power	4 / 7,5 kW

FEEDER FD-AVA 800 / 1000

Dimensions FD-AVA-800	3800x800 mm
Dimensions FD-AVA-1000	4500x950 mm
Power	11 / 15 kW
Pre-hopper capacity	4 / 5 m3
Maximum production	200 / 300 TPH
Weight	4500 / 7200 Kg

Removable pre-hopper for transport.
Pointed screening machine possibility.

DISTRIBUTION BOARD

Metal galvanized steel cupboard painted in the oven and with watertight IP54. Electric panel equipped with POWER ELECTRONIC frequency drives, SD300 for the control of the feeder and SD 700 for the regulation of the crusher engine. Magnetic and thermal protection, protection differentials for indirect contacts and control automation of the equipment. Set installed in a second protective cabinet against vandalism, IP66 sealing. Optional installation of temperature probes in motor and bearings in addition to vibration sensor of the crusher.

JAW CRUSHER JCR-P LEO 0806 / 1075

Mouth dimensions LEO 0806	800x600 mm
Mouth dimensions LEO 1075	1000x750 mm
Maximum production	150 / 250 TPH
Drive	Pulleys + Belts
Power	75 / 90 kW
Weight	12500 / 24800 Kg

TRAILER

Structure formed by double T beams.
6 tyres 385/55 R22.5
Telescopic support legs to lift and lower the trailer both when loaded and unloaded.
Side and rear protections in aluminium.
EBS + RSS brake system with anti-lock control system.



CR 50 - 250 TPH

HARD & ABRASIVE STONE

HIGH PRODUCTIVITY



**LEMMING
CRUSHERS**



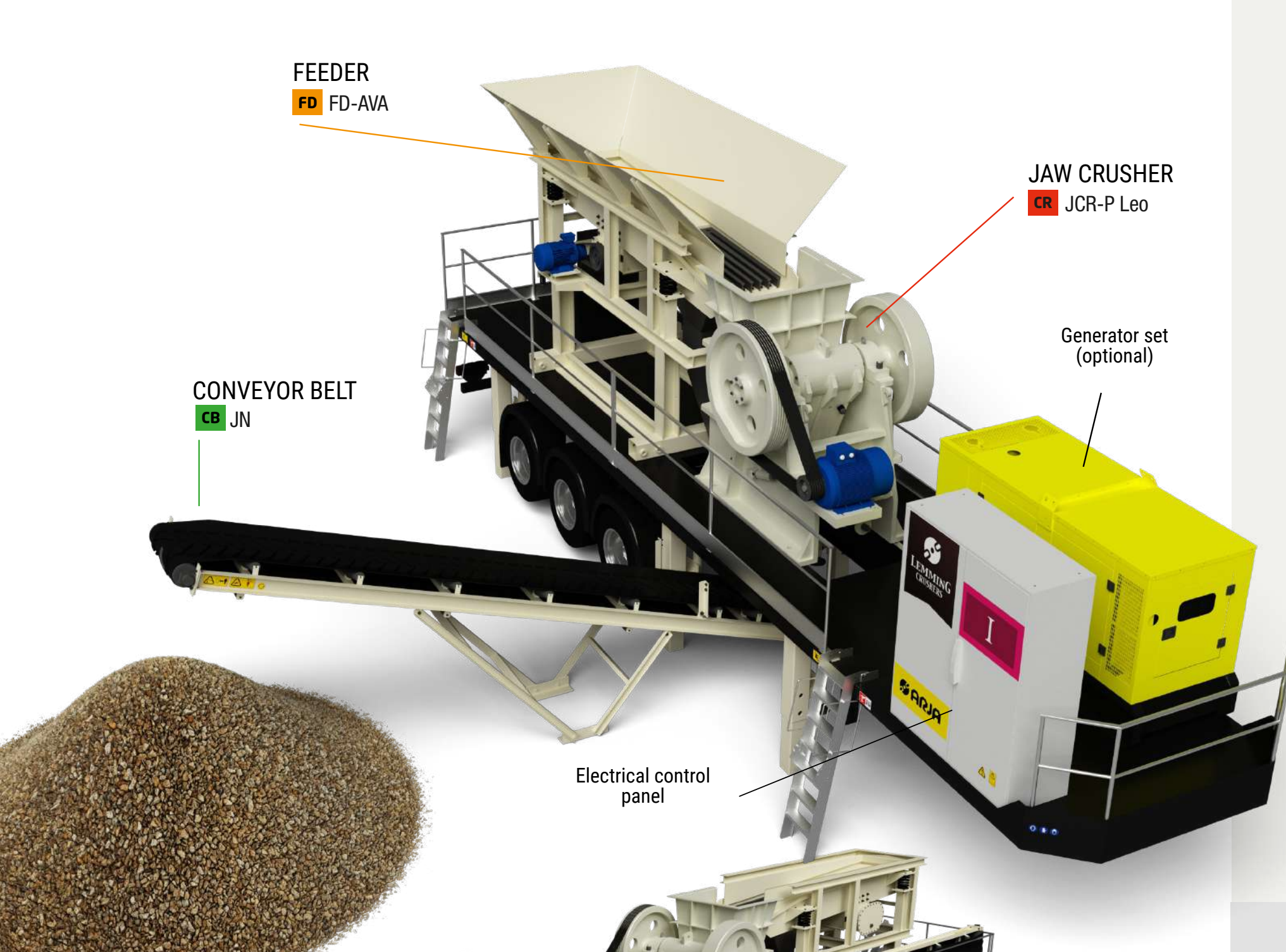
+34 973 199 163

info@arja.com

Carretera Alamús, s/n, E-25221
Els Alamús, Lleida, Spain.



www.arja.com



FEEDER
FD FD-AVA

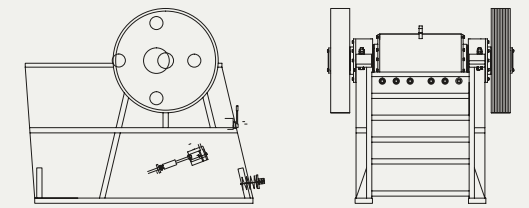
JAW CRUSHER
CR JCR-P Leo

CONVEYOR BELT
CB JN

Generator set
(optional)

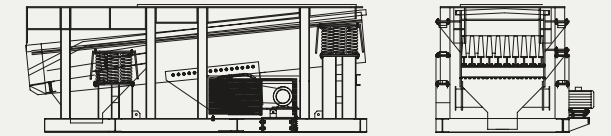
Electrical control
panel

JAW CRUSHER
JCR-P Leo



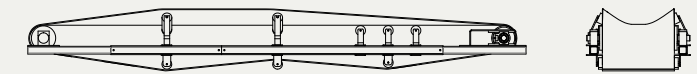
CR	TPH	kW	Kg
JCR-P Leo 0806	50 - 150	55	12500
JCR-P Leo 1075	90 - 250	75	24800

FEEDER
FD-AVA



FD	TPH	kW	Kg	Un
FD-AVA 800	200	11	4500	8
FD-AVA 1000	300	15	7200	8

CONVEYOR BELT
CB-JN



CB	mm	TPH	kW	mm
CB-JN 800	800	250	4 - 7,5	0 - 250

Production Power Weight Springs Dimensions of tray Feed size



**Ease of mobility to satisfy
your needs!**

Features:

- Total portability without the need for vehicles and/or special accessories, in addition to complete autonomy thanks to the generator unit that is an integral part of the equipment.
- Highly efficient when treating aggregates thanks to a Grizzly feeder equipped with a frequency inverter for greater control of the process.
- AVA vibrating feeders are characterized by their great robustness and tray reinforcements, in addition to being easy to disassemble and maintain. The waste rock grate is manufactured according to quarry characteristics.
- Thanks to the NO-CLOG system, the power control algorithm activates the maximum power torque sequentially in one direction and then in the other until it eliminates the jammed element.
- Maximum engine performance and reduced electrical consumption thanks to the speed variator equipped in the series.
- The crusher is equipped with a system of safety springs that prevent accidental entry of iron or non-crushable elements.
- LEO jaw crushers are composed of an electro-welded steel frame, mounted on four double row roller bearings, counterbalanced flywheels, 14/16% manganese steel jaw, hydraulic opening and closing system. Centralized lubrication system. All of this gives them excellent robustness and efficiency.
- Centralized equipment regulation and control system in an electronic tablet thanks to the installation of programmable automation. The Vijeo Design'Air app for Smartphones is available as an optional accessory.
- It has four telescopic legs by means of a hydraulic system.
- To ensure the manufacture of a product with the highest quality, all components have been strictly selected due to being the best on the market (bearings, cast elements, electrical equipment, etc.)