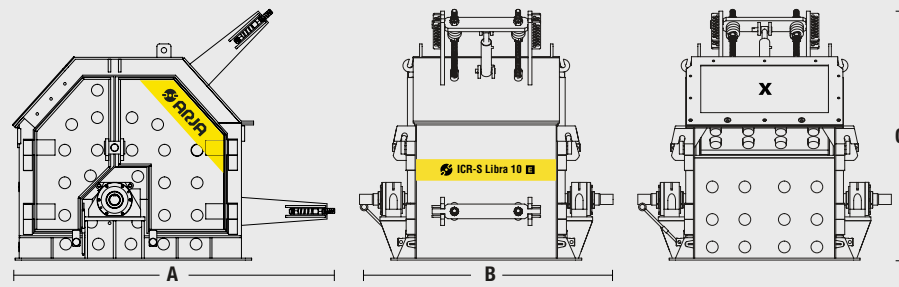


**IMPACT CRUSHER**  
**ICR-S Libra**  
5 / 10

**E** HYDRAULIC  
CLAMPING SYSTEM



**IMPACT CRUSHER**  
**ICR-S Libra**

**CR**

**THE SOLUTION FOR MANY CRUSHING APPLICATIONS**

Secondary and tertiary crushing in one single machine.

Our most affordable impact crusher.



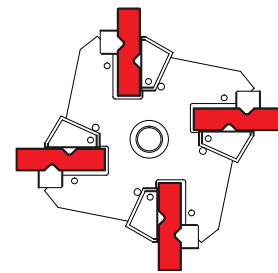
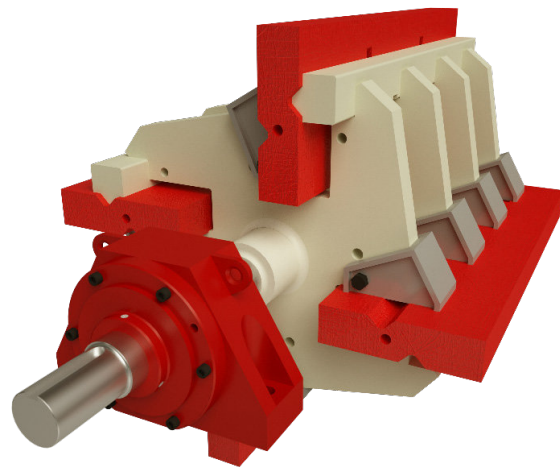
**CR 40 / 100 TPH**

**HARD & ABRASIVE STONE**

**HIGH PRODUCTIVITY**

Model	TPH	kW	mm	mm	Kg	Un	A x B x C
ICR-S Libra 5	40	37	500 x 500	0 - 170	4300	4	2525 x 1490 x 1950
ICR-S Libra 10	80	75	500 x 1000	0 - 170	6400	8	2525 x 1985 x 1950

Production Power Feed opening Feed size Weight Blow Bars



ICR-P Libra	5	10
Diameter (mm)	925	925
Length (mm)	525	1025
Weight (kg)	526	857
Bars (u)	4	8
Arms (u)	4	4

**IMPROVE YOUR PERFORMANCE**

ALL OUR WEAR PARTS ARE AVAILABLE IN:

Ceramic / High Chrome / Martensitic



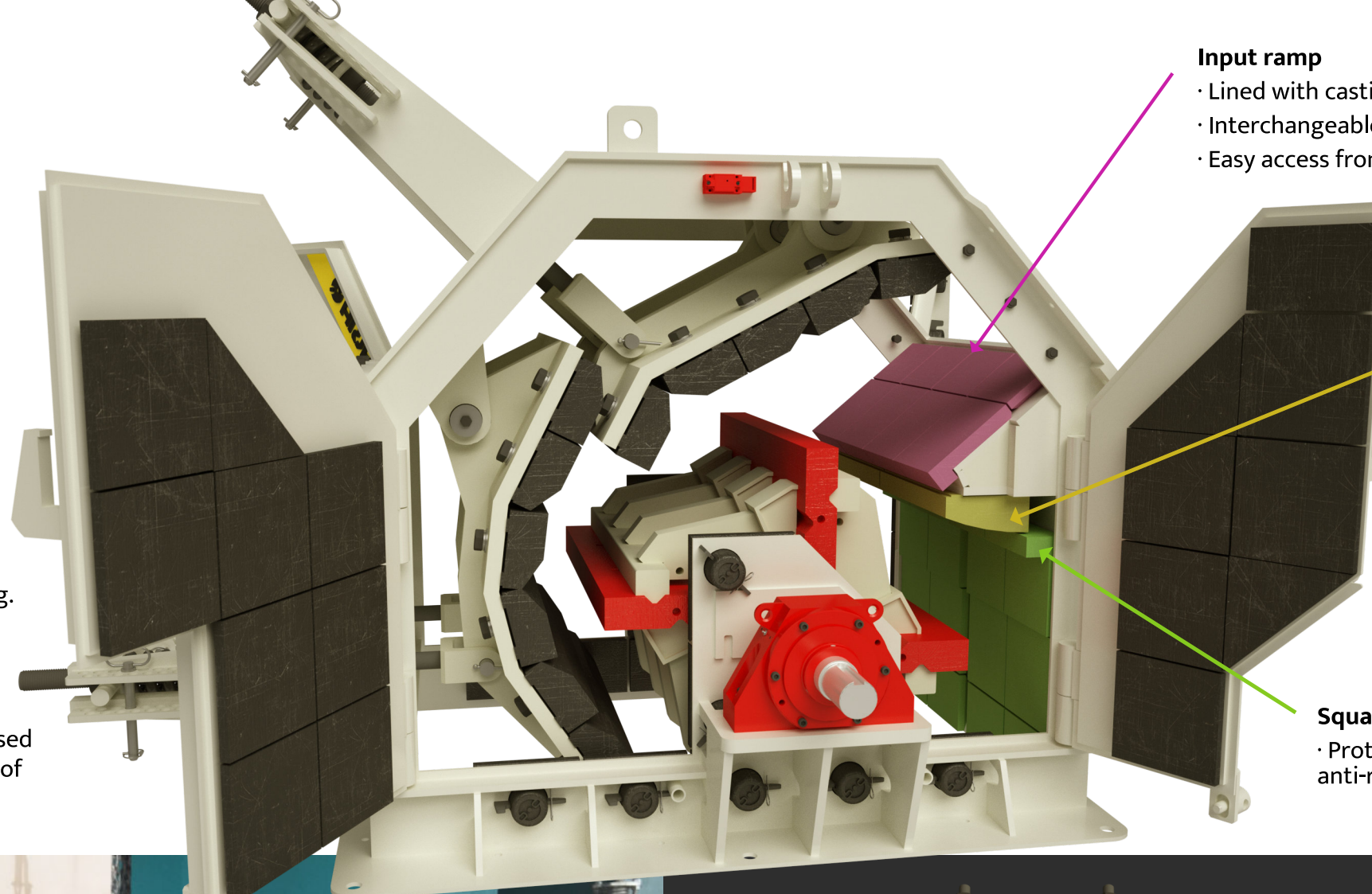
Carretera Alamús, s/n, E-25221  
Els Alamús, Lleida, Spain.

+34 973 199 163

info@arja.com

www.arja.com

- Secondary impact crusher very versatile. It can perform secondary and tertiary works.
- Perfect cubical shape by 2 impact aprons and its standard hydraulic adjustment system.
- Maximum feeding size up to 180 mm.
- Output size 0-25 mm (in a single pass).
- Easy and quick access to the crushing chamber through 4 lateral doors.
- Interchangeable consumable parts.
- Lifting system to simplify maintenance of consumable parts.
- Impact plates and blow bars made of high chrome, also available in ceramic format for abrasive minerals and martensitic for debris.
- 4 blow bars positions, efficiency of original casting.
- Oversized and reinforced rotor.
- Thanks to the DINAFLOW system together with the rotor impact with horizontal axis crushing system, the inertia produced by its movement is used to generate electricity, reducing the consumption of electrical energy.



**Input ramp**

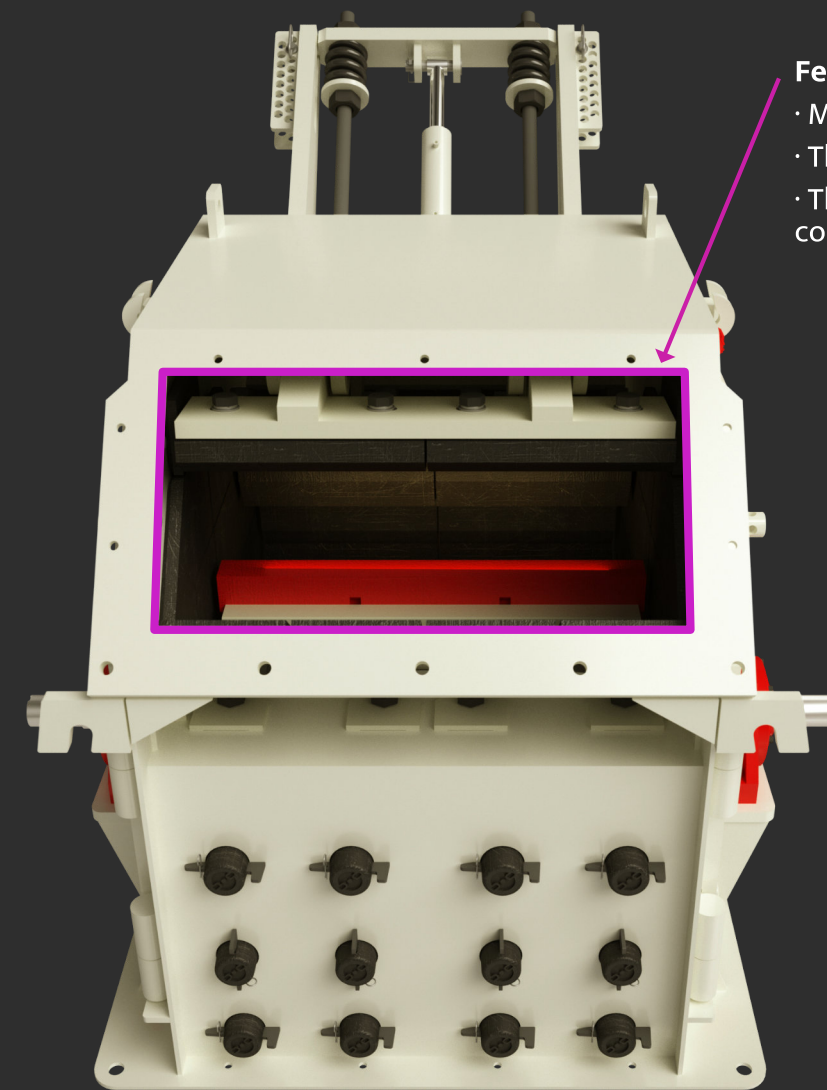
- Lined with casting, for a longer durability.
- Interchangeable parts.
- Easy access from the outside for a quick maintenance.

**Anti-return apron**

- Keeps the material inside the crushing chamber.
- Adjustable.
- Easy maintenance from outside.
- Forces the small sizes to pass through the crushing chamber.

**Square with heel**

- Protects the housing of the crusher when the anti-return apron is adjusted due to its wear.



**Feeding inlet**

- Maximum feeding size up to 180 mm.
- The feeding inlet design has an anti-bounce system.
- This system minimizes the wear on the hoppers and conveyor belts breakdown.

