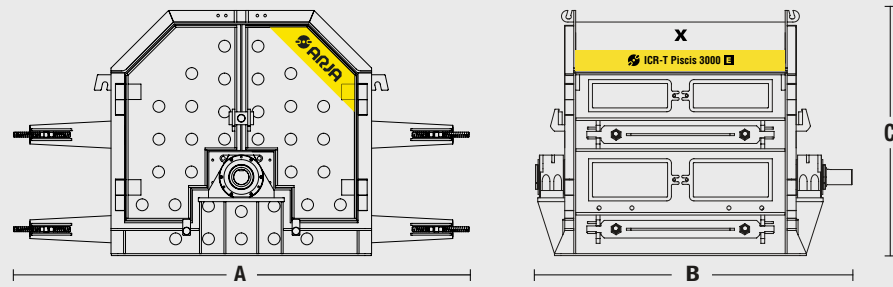


IMPACT CRUSHER
ICR-T Piscis
1000 / 2000 / 3000

E HYDRAULIC
CLAMPING SYSTEM



IMPACT CRUSHER
ICR-T Piscis 1000 / 2000 / 3000

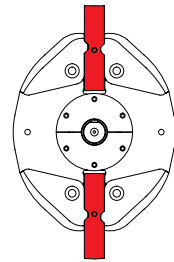
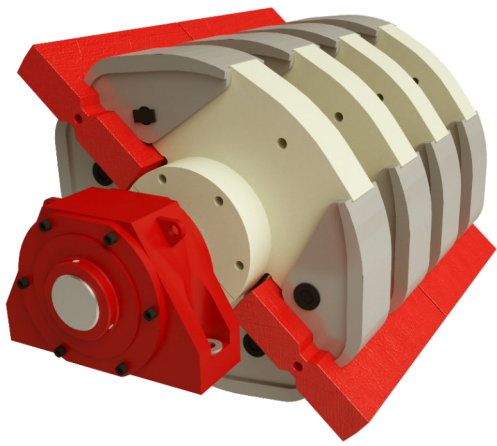


Model	TPH	kW	mm	mm	Kg	Un	A x B x C
Piscis 1000	60	110	140 x 500	0 - 90	6750	2	3450 x 1325 x 1905
Piscis 2000	120	200	140 x 1000	0 - 90	10400	4	3450 x 1860 x 1905
Piscis 3000	180	315	140 x 1500	0 - 90	14800	6	3550 x 2460 x 1905

Production
 Power
 Feed opening
 Feed size
 Weight
 Blow Bars

THE HIGHEST SAND PRODUCTION RATIO IN THE MARKET

Outstanding grading curve.
Increasing your profit with high wearing ceramic consumables.



ICR-S Piscis	1000	2000	3000
Diameter (mm)	1000	1000	1000
Length (mm)	525	1025	1600
Weight (kg)	859	1458	2552
Bars (u)	2	4	6
Arms (u)	2	2	2

IMPROVE YOUR PERFORMANCE

ALL OUR WEAR PARTS ARE AVAILABLE IN:
Ceramic / High Chrome / Martensitic



CR 60 / 180 TPH
HARD & ABRASIVE STONE
HIGH PRODUCTIVITY



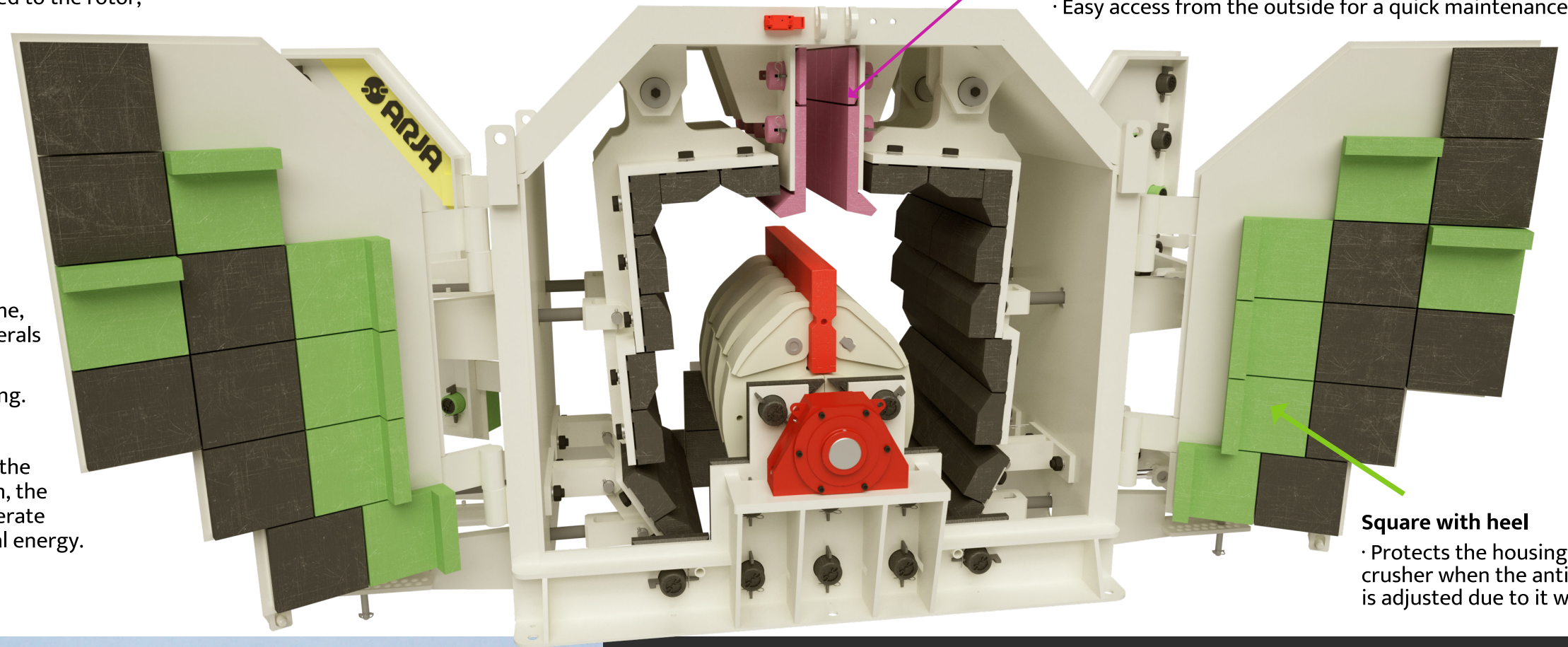
Carretera Alamús, s/n, E-25221
Els Alamús, Lleida, Spain.

+34 973 199 163

info@arja.com

www.arja.com

- Tertiary impact crusher very versatile. It can perform tertiary works and shape rectifiers.
- Perfect cubical shape by 4 impact aprons adjusted to the rotor, 2 on each side. A reversible equipment with standard hydraulic adjustment system.
- Maximum feeding size up to 90 mm.
- Output size 0-10 mm (in a single pass).
- Easy and quick access to the crushing chamber through 4 lateral doors.
- Interchangeable consumable parts.
- Lifting system to simplify maintenance of consumable parts.
- Impact plates and blow bars made of high chrome, also available in ceramic format for abrasive minerals and martensitic for debris.
- 4 blow bars positions, efficiency of original casting.
- Oversized and reinforced rotor.
- Thanks to the DINAFLow system together with the rotor impact with horizontal axis crushing system, the inertia produced by its movement is used to generate electricity, reducing the consumption of electrical energy.



Input ramp

- Lined with casting, for a longer durability.
- Interchangeable parts.
- Easy access from the outside for a quick maintenance.

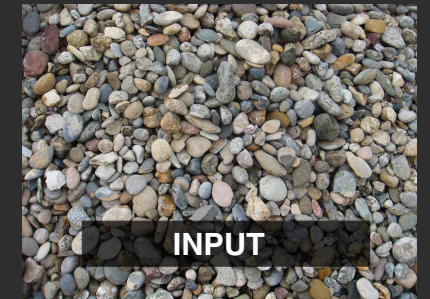
Square with heel

- Protects the housing of the crusher when the anti-return apron is adjusted due to it wear.



Feeding inlet

- Maximum feeding size up to 90 mm.
- The feeding inlet design has an anti-bounce system.
- This system minimizes the wear on the hoppers and conveyor belts breakdown.



INPUT



OUTPUT

